



chieftainfabrics



Ravel



chieftainfabrics

Ravel

Composition: 100% Polyester

Design: Plain Weave

Total Weight: 450g/m² ±

Tensile Strength: Warp: 1414.3N
Weft: 1038.5N

Tear Strength: Warp: 131.1N
Weft: 133.8N

Abrasion: >100,000

Antimicrobial: Will not support microbial or fungal growth including Ecoli and MRSA

Flame Retardancy: BS5852 Crib 5

Suitability: Severe Contract

Wash and Care Instructions:

Ravel is treated with stain resistant finish.

Ravel should be cleaned regularly. Remove spillages promptly with an absorbent dry cloth. Solid stains should be removed gently first, before being wiped with a damp cloth in a circular motion. It is essential that all residue is removed from the surface. Do not leave liquids in situ. Do not use solvents, abrasives, synthetic detergents, wax polishes or aerosol sprays.

For more information please visit our website www.chieftainfabrics.com.

Disclaimer:

Batch-to-batch variations in shade may occur within commercial tolerances. We reserve the right to alter technical specifications without notice. The Unregistered Design Rights and the Copyright in all designs are the exclusive property of Chieftain Fabrics.

For more information please visit our website www.chieftainfabrics.com.

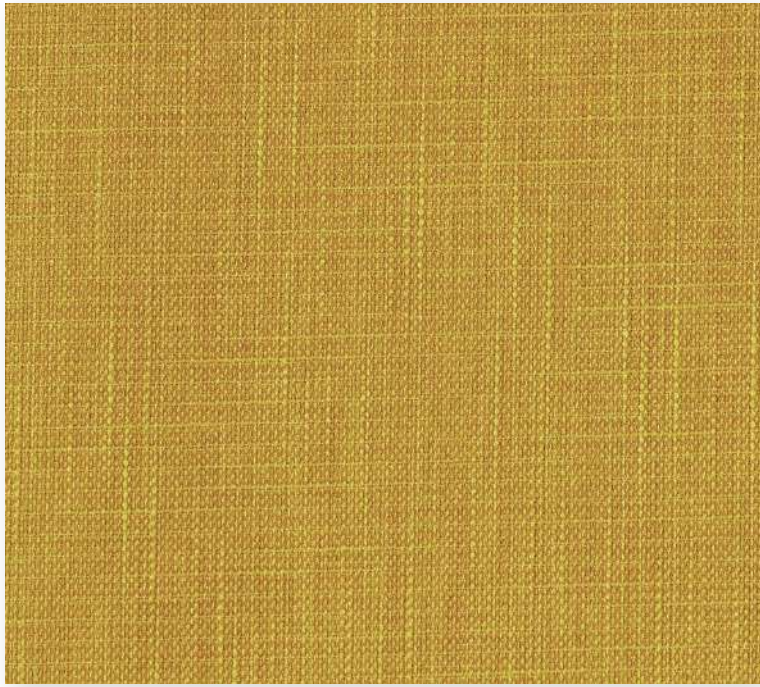
Chieftain Fabrics
Wellington Place
Trim
Ireland
C15 W248

Tel: 00353 46 943 1396
Fax: 00353 46 943 7669

UK Freephone: 0800 0355 955
UK Fax: 0845 8622 046

marketing@chieftainfabrics.com
www.chieftainfabrics.com





Naples



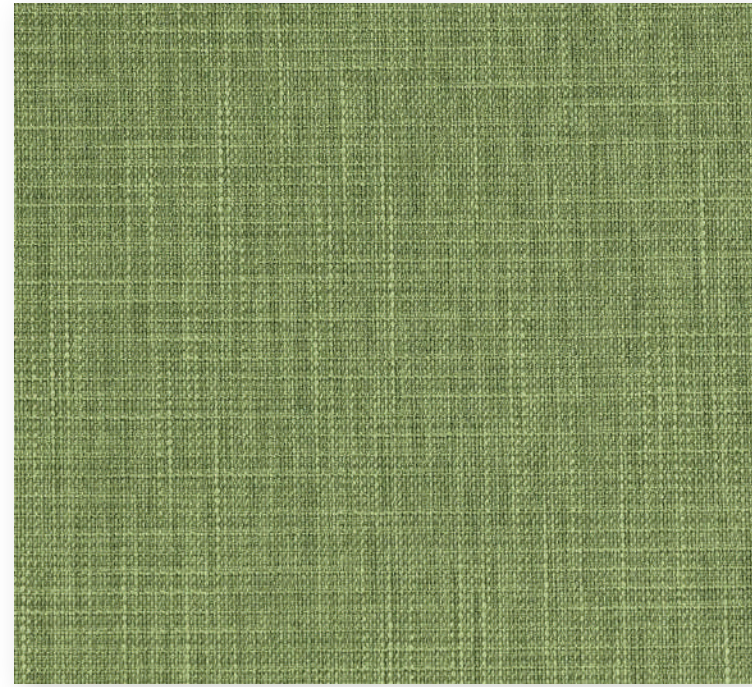
Porridge



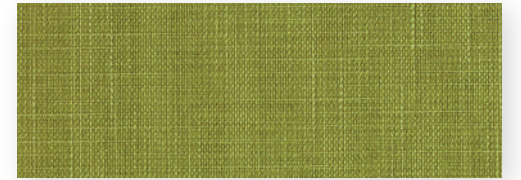
Hessian



Ganache



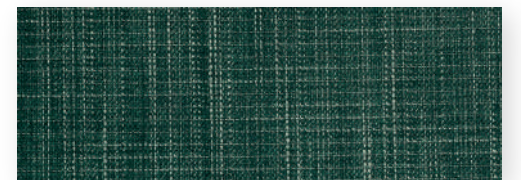
Aspen



Umami



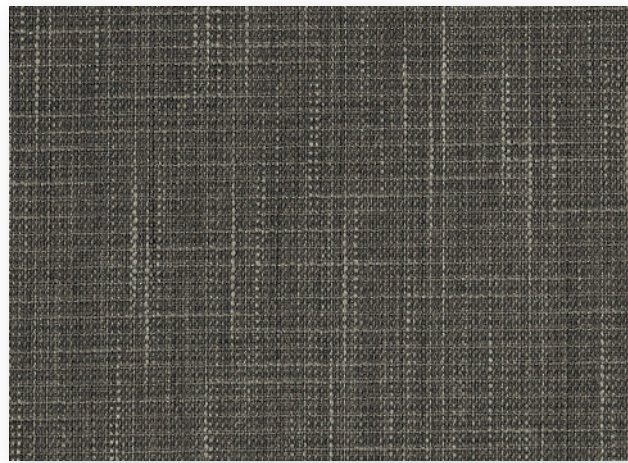
Guacamole



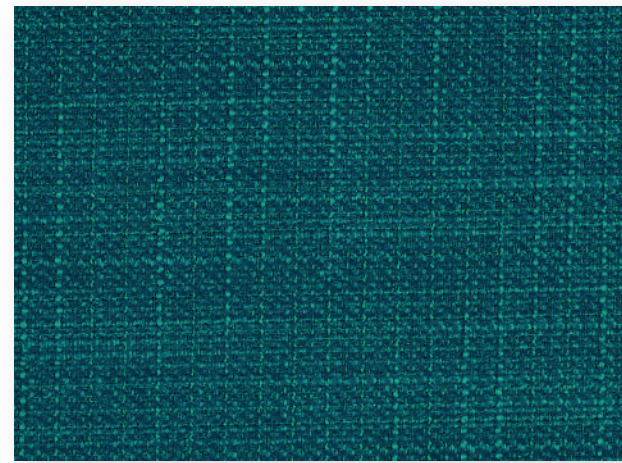
Hosta



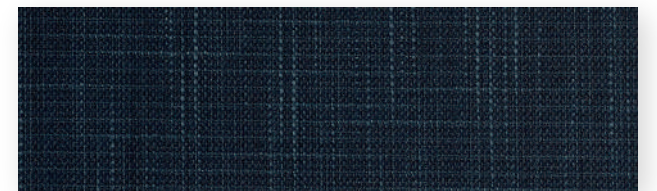
Cumin



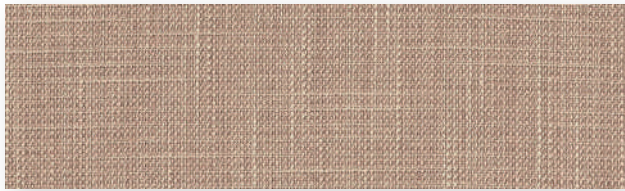
Zinc



Kingfisher



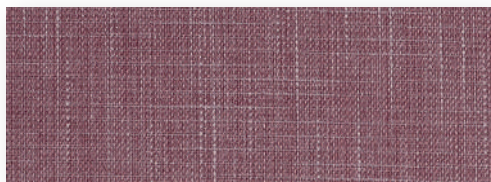
Prussian Blue



Babe



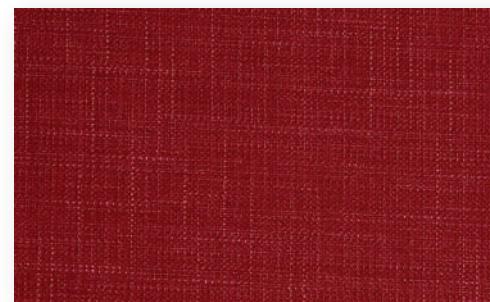
Sweep



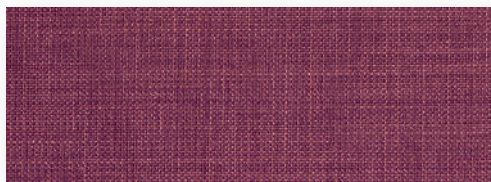
Elderberry



Fandango



Hollyberry



Pansy



Tomato



Chianti



Marmalade